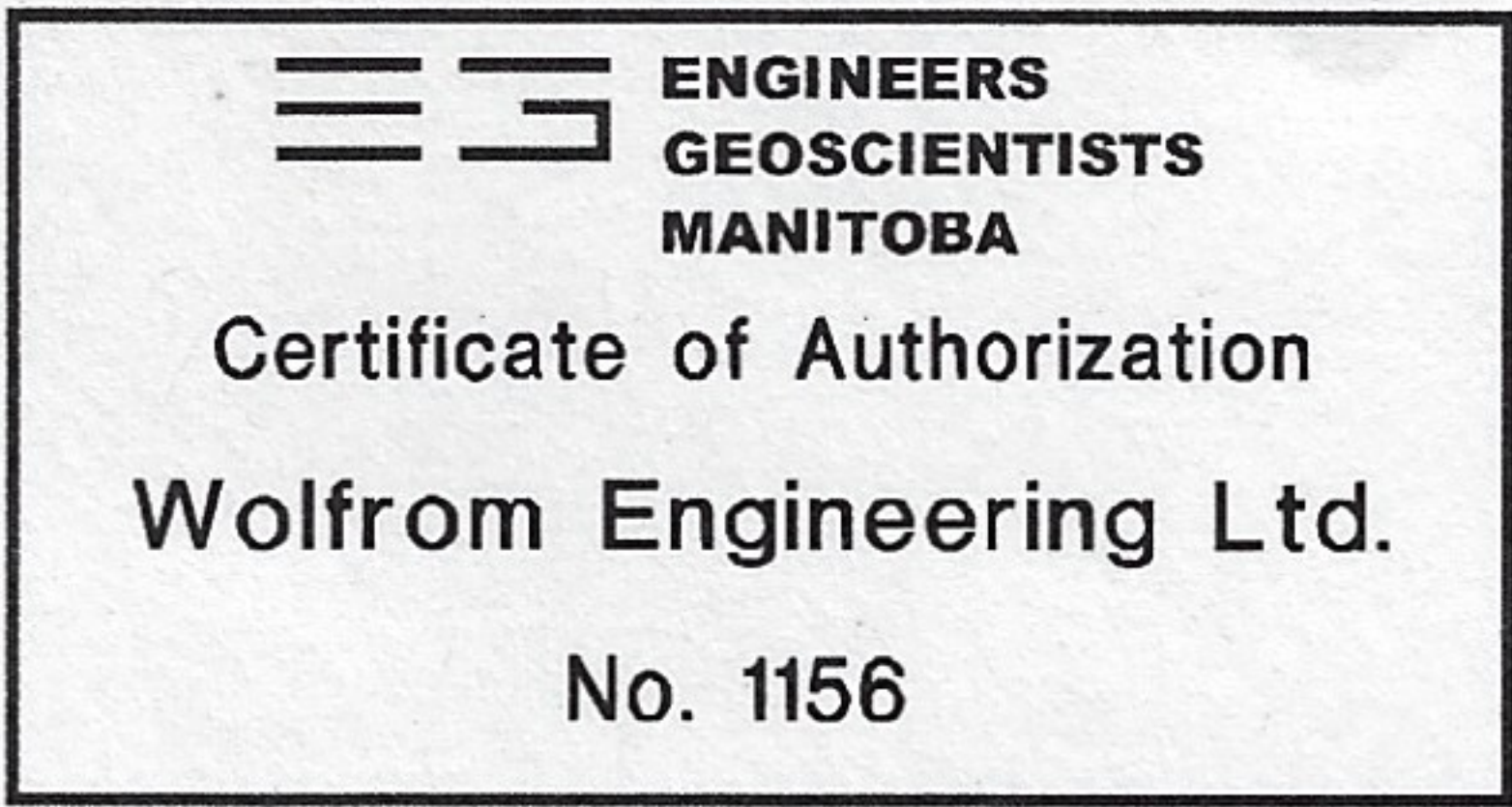


GROUNDHOG ANCHOR AND SUPPORT SYSTEMS			
RECOMMENDED DESIGN LOADS			
ANCHOR TYPE MODEL NO.	SHAFT LENGTH	FLIGHT AUGER DIAM.	ALLOWABLE LOAD (LBS)
12/12	12'-0"	12"	5000
8/12	8'-0"	12"	5000
8/9	8'-0"	9"	3000
6/8	6'-0"	8"	2000

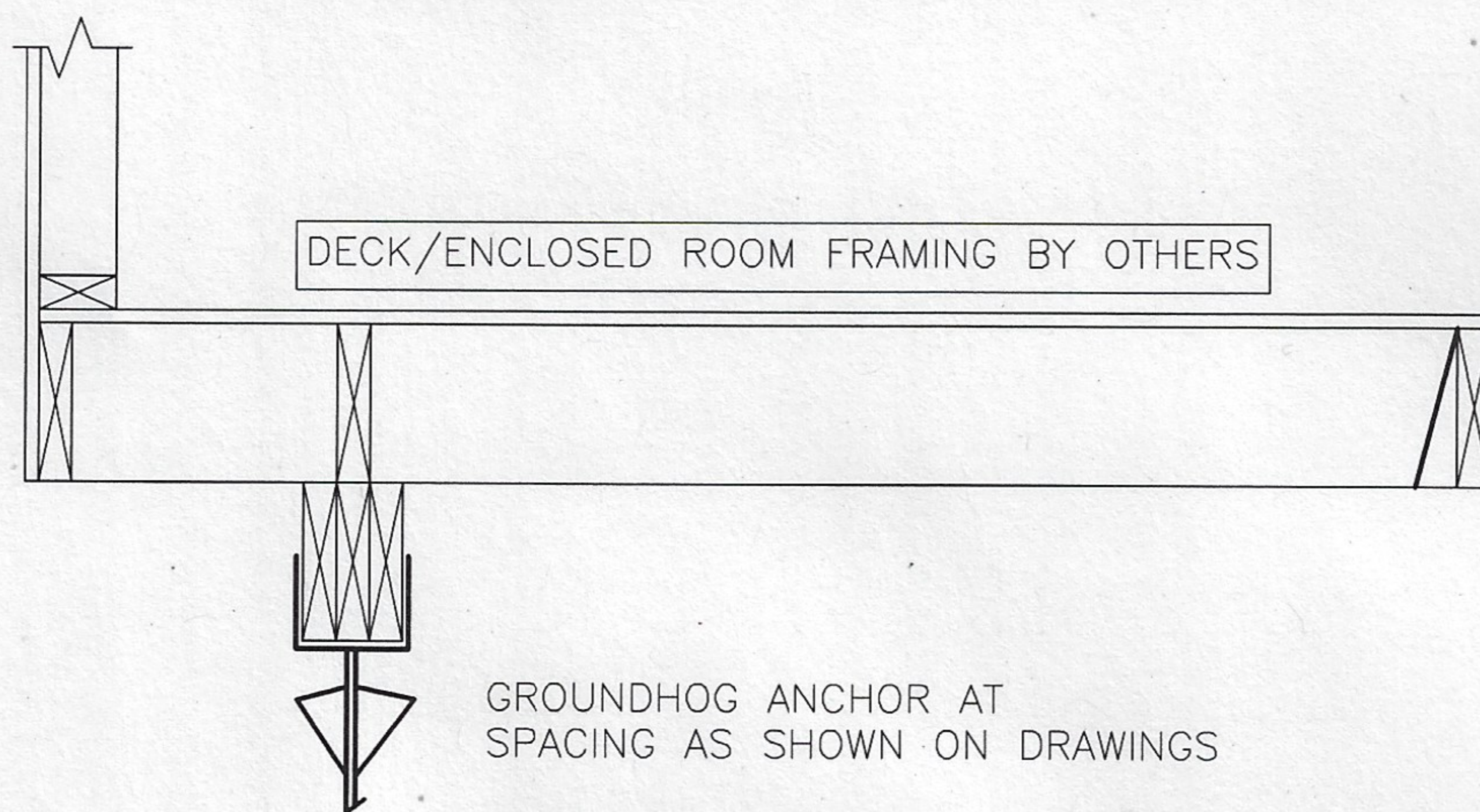
Notes:

1. Ultimate loads were based on a vertical applied load that created a 0.1 inch displacement.
National Testing Laboratories Limited, report date June 07, 2010.
2. Piles have been tested according to the requirements of ASTM D1143.
3. Piles comply to the requirements of:
 - a. Clause 4.2.3.8 (1)
 - b. Sentence 4.2.3.10 (1)
 - c. Sentence 4.2.4.1 (1)
 - d. Sentence 9.4.1.1 (1)(c)(i)
 of the Manitoba Building Code (2024)
4. Safety factor applied to ultimate load=2.
5. Test soil type was firm to stiff clay - (1500 psf bearing capacity)
6. Loads values will have to be revised for different soil conditions.
Engineer to be contacted if site soil conditions are not firm to stiff clay or dense sand
Engineer shall be retained to calculate the loads being applied.
7. Site specific field modifications to be undertaken by registered installers of Groundhog Anchors only.

CERTIFICATION APPLICABLE FOR MAY 2025 - MAY 2026



WOLFROM ENGINEERING LTD CONSULTING ENGINEERS 345 WARDLAW AVENUE WINNIPEG, CANADA R3L 0L5 (204)452-0041 FAX: 284-8680 E-Mail: info@wolfromeng.com	DATE	MAY, 16 2025	SEAL
	SCALE	AS NOTED	
	FILE NO.	W25175	
JOB TITLE DESIGN CRITERIA GROUNDHOG ANCHOR AND SUPPORT SYSTEMS NEW ORDER ENTERPRISES	DRAWING NO.	SK-1	



GROUNDHOG ANCHOR 8/9—CAPACITY 3000 LBS
 GROUNDHOG ANCHOR 12/12 AND 8/12 CAPACITY 5000 LBS
 GROUNDHOG ANCHOR 6/8 CAPACITY 2000 LBS

General Notes:

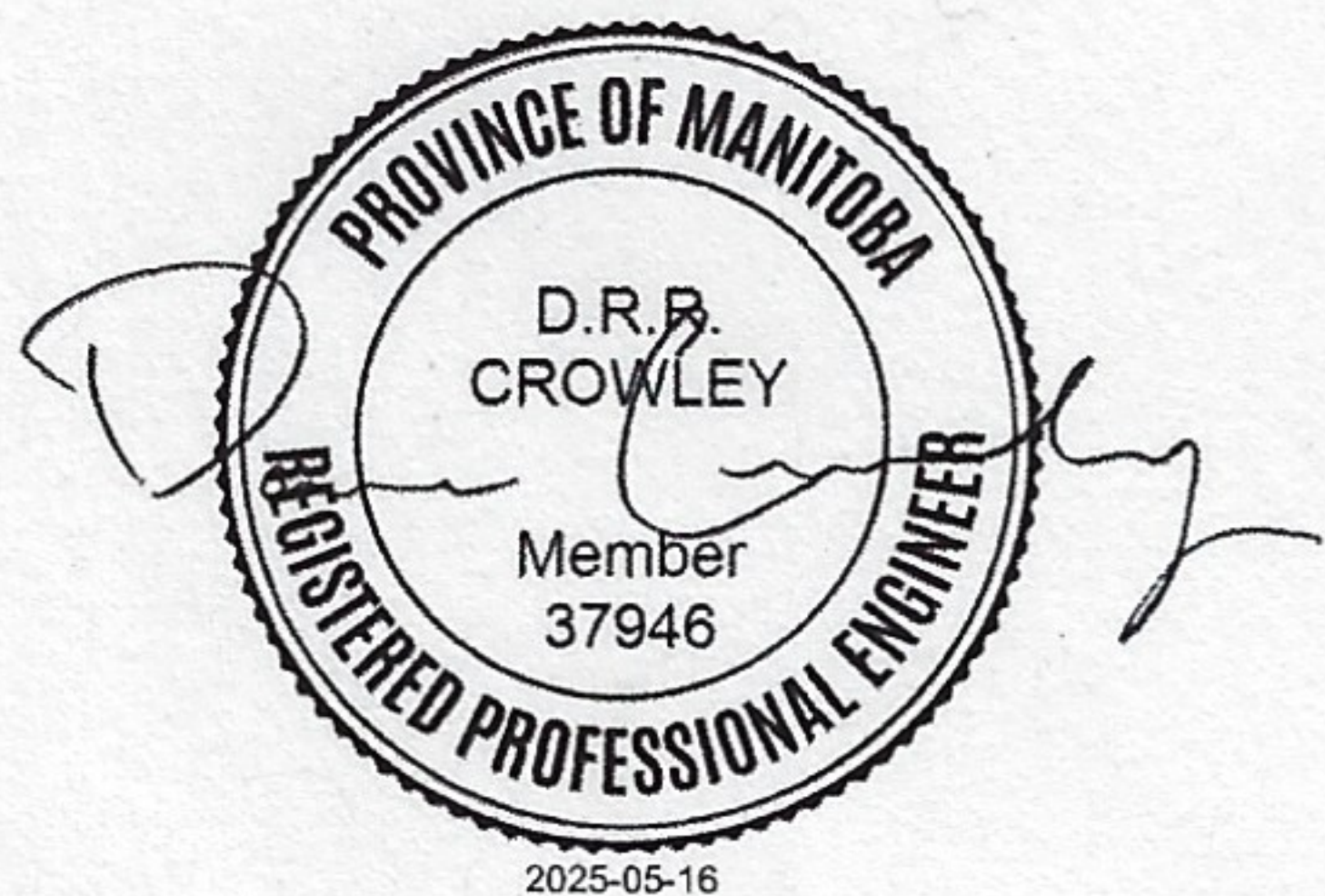
This sketches and drawings are not site specific.
 Soil conditions may vary from site to site. Building
 authorities will require site specific drawings.
 The Engineer has not been retained to provide drawings or supervision.

GROUNDHOG ANCHOR TO BE INSTALLED IN FIRM TO STIFF CLAY OR DENSE SAND

NOTE:

FRAMING SHOWN ON SECTION IS A GENERAL ASSEMBLY ONLY AND IS NOT MEANT FOR
 CONSTRUCTION. REFER TO LOCAL BUILDING CODES OR DRAWINGS FOR FRAMING SPECS AND
 GROUNDHOG SPACING.

CERTIFICATION APPLICABLE FOR MAY 2025 — MAY 2026

WOLFROM ENGINEERING LTD CONSULTING ENGINEERS 345 WARDLAW AVENUE WINNIPEG, CANADA R3L 0L5 (204)452-0041 FAX: 284-8680 E-Mail: info@wolfromeng.com	DATE MAY 16, 2025	SEAL 
	SCALE AS NOTED	
	FILE NO. W25175	
JOB TITLE TYPICAL CROSS SECTION GROUNDHOG ANCHOR AND SUPPORT SYSTEMS NEW ORDER ENTERPRISES	DRAWING NO. SK-2	